

# For large vertical and horizontal surfaces.

Urban is a finish that was designed for the world of architecture. It meets every aesthetic and technical need in projects involving the construction of large vertical and horizontal surfaces.

It is the ideal solution for:  
exterior façades  
cladding  
flooring  
walkways

## Lapitec S.p.A.

Via Bassanese 6 | 31050 Veduggio | Treviso | Italy

T. +39 0423 700239 | F. +39 0423 709540

info@lapitec.it | [lapitec.com](http://lapitec.com)



08/16 - US

**Lapitec**<sup>®</sup>  
Prestigious Italian Surface

**GliUrban.**

## A perfect example of urban style.

Urban is a finish inspired by the personality of the big city: dynamic, lively, high-performance. It is functional as well as respectful of the environment and complements the naked materials of the big cities around the world.

Urban is a finely structured finish, with a distinctive roughness inspired by the contemporary world. It is manufactured in XXL format slabs, up to 3365x1500 mm (132½x59 in). Each slab is available in thicknesses of 1.2, 2, 3 cm (½", ¾", 1¼").



## Anti-graffiti and low maintenance

If smeared with paint or spray paints, it can be easily cleaned with solvents and a high pressure cleaner. Through the use of titanium dioxide, Bio-Care Technology breaks down organic compounds allowing dirt to be washed off by rain water or wiped clean.



## UV resistant

There is no colour variation when exposed to UV rays.



## Resistant to corrosion

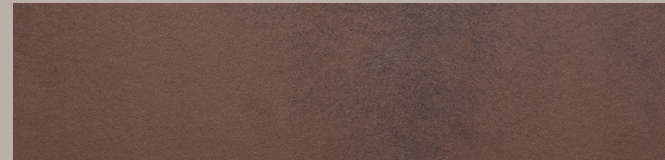
Resistant to hostile environments and to corrosion by saline substances.



## Resistant to extreme temperatures

It is freeze-thaw resistant and deals with extreme temperatures well, even when exposed to thermal shock.

# Colourtable



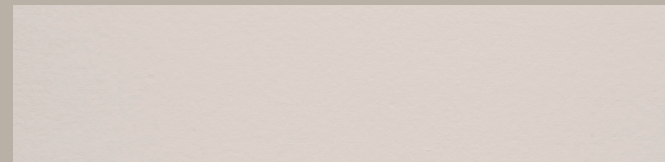
### BROOKLYN

A new interpretation of the shades from oxidized metals. The colour imitates the Corten weathering steel effect with surprising results.



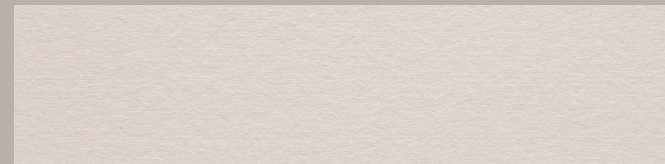
### LONDON

From cool greys to hard steel, a metropolitan nuance that reflects the aesthetic of London's streets, squares and architecture.



### ROMA

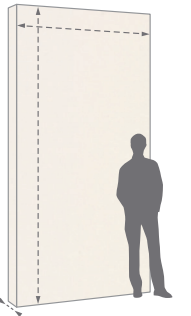
From the grandeur and elegance of the Eternal City, Lapitec® has created the Roma colour. Inspired by extraordinary palaces, cladding and columns, its cream tones transmit a warm and elegant atmosphere to any environment.



### CASABLANCA

Its pure white recalls the buildings of the city of Morocco. On the surface, its tone is clear like the white of the houses that stand out from the waters of the Mediterranean Sea.

# technical specifications



TECHNICAL SPECIFICATIONS		STANDARDS	TEST RESULT
	Maximum dimension	EN 14617-16	3365 x 1500 mm 132 ½ x 59 in
	Thicknesses	EN 14617-16	12 - 20 - 30 mm ½ - ¾ - 1¼ in
	Specific weight	EN 14617-1 ASTM C97	2,4 kg/dm <sup>3</sup> 149 lb/ft <sup>3</sup>
	Flexural strength	EN 14617-2 ASTM C880	53 N/mm <sup>2</sup> 7.687 lbf/in <sup>2</sup> 43 N/mm <sup>2</sup> 6.237 lbf/in <sup>2</sup>
	Water absorption	EN 14617-1 ASTM C97	0,1% 0.03%
	Resistance to compression	ASTM C170	483 N/mm <sup>2</sup> 70 lbf/in <sup>2</sup>
	Impact resistance	EN 14617-9	3,3 Joule sample: 20 mm thick sample: ¾ in thick
	Deep abrasion resistance	EN 14617-4	25,5 mm 0.98 in
	Frost resistance	EN 14617-5	Resistant
	Fire reaction	EN 13501-1	A1
	resistance to chemical substances	EN 14617-10 ASTM C650	C4 - Resistant Not damaged
	Colour resistance to light	DIN 51094	No change of colours
	Coefficient of linear thermal expansion	EN 14617-11	6,3 x 10 <sup>-6</sup> °C <sup>-1</sup>
	Thermal conductivity	EN ISO 10456	1,3 W / m · °K