

CLIFFSTONE

**MATERIA
RITROVATA**
*rediscovered
material*



LEA
CERAMICHE



**FINITURE, FORMATI
E COLORI DIVERSI PER
MOLTEPLICI SOLUZIONI
PROGETTUALI.**

Different finishes,
sizes and colors offer
a wide range of solutions
for projects.



CLIFFSTONE

4 COLORI
white dover
beige madeira
taupe moher
grey tenerife

4 COLORS
white dover
beige madeira
taupe moher
grey tenerife

4 FINITURE
lappata
naturale
anticata
grip

4 FINISHES
lappata
naturale
anticata
grip

7 FORMATI
90x90cm
60x120cm
60x90cm
60x60cm
40x60cm
30x60cm
20x60cm

7 SIZES
36"x36"
24"x48"
24"x36"
24"x24"
16"x24"
12"x24"
8"x24"





**CLIFFSTONE
WHITE DOVER**

Pavimento / Floor
lappata rett. 90x90cm / 36"x36"



BATHROOM

CLIFFSTONE GREY TENERIFE

Parete / Wall
naturale rett. multiformato 5
Pavimento / Floor
naturale rett. 90x90cm / 36"x36"



[SHOP](#)

**CLIFFSTONE
WHITE DOVER**

Pavimento / Floor
anticata rett. 60x120cm / 24"x48"





**CLIFFSTONE
TAUPE MOHER**

Pavimento / Floor
lappata rett. multiformato 4

Lastre effetto pietra che ripropongono le vene e le inclusioni del materiale lapideo. Venature differenti per ogni singolo pezzo, segni artificiali che si vanno a sovrapporre alla consistenza della materia.

L'essenza di ciascuna collezione non sta nel singolo modulo ma nel movimento che si viene a creare sulla superficie complessiva. Come nella nuova collezione Cliffstone, interpretazione di una pietra rocciosa inesistente in natura ma reinventata con creatività da Lea Ceramiche.

Stone effect slabs that reproduce the veins and characteristics of stone. Different veining for each individual piece, artificial markings that overlay the consistency of the material. The essence of each collection is not in the single piece but in the movement created on the surface. As with the new Cliffstone collection, the interpretation of a rocky stone that does not exist in nature but has been reinvented creatively by Lea Ceramiche.



PUBLIC AREAS

**CLIFFSTONE
TAUPE MOHER**

Pavimento / Floor
naturale rett. 60x120cm / 24"x48"

SHOP

**CLIFFSTONE
WHITE DOVER**

Pavimento / Floor
anticata rett. 60x120cm / 24"x48"



**CLIFFSTONE
BEIGE MADEIRA**

Pavimento / Floor
anticata rett. multiformato 5



**CLIFFSTONE
GREY TENERIFE**

Pavimento / Floor
naturale rett. 60x60cm / 24"x24"



**CLIFFSTONE
WHITE DOVER**

Pavimento / Floor
antica rett. 60x120cm / 24"x48"



**CLIFFSTONE
TAUPE MOHER**

Pavimento / Floor
lappata rett. multiformato 4





**CLIFFSTONE
BEIGE MADEIRA**

Pavimento / Floor
anticata rett. multiformato 5

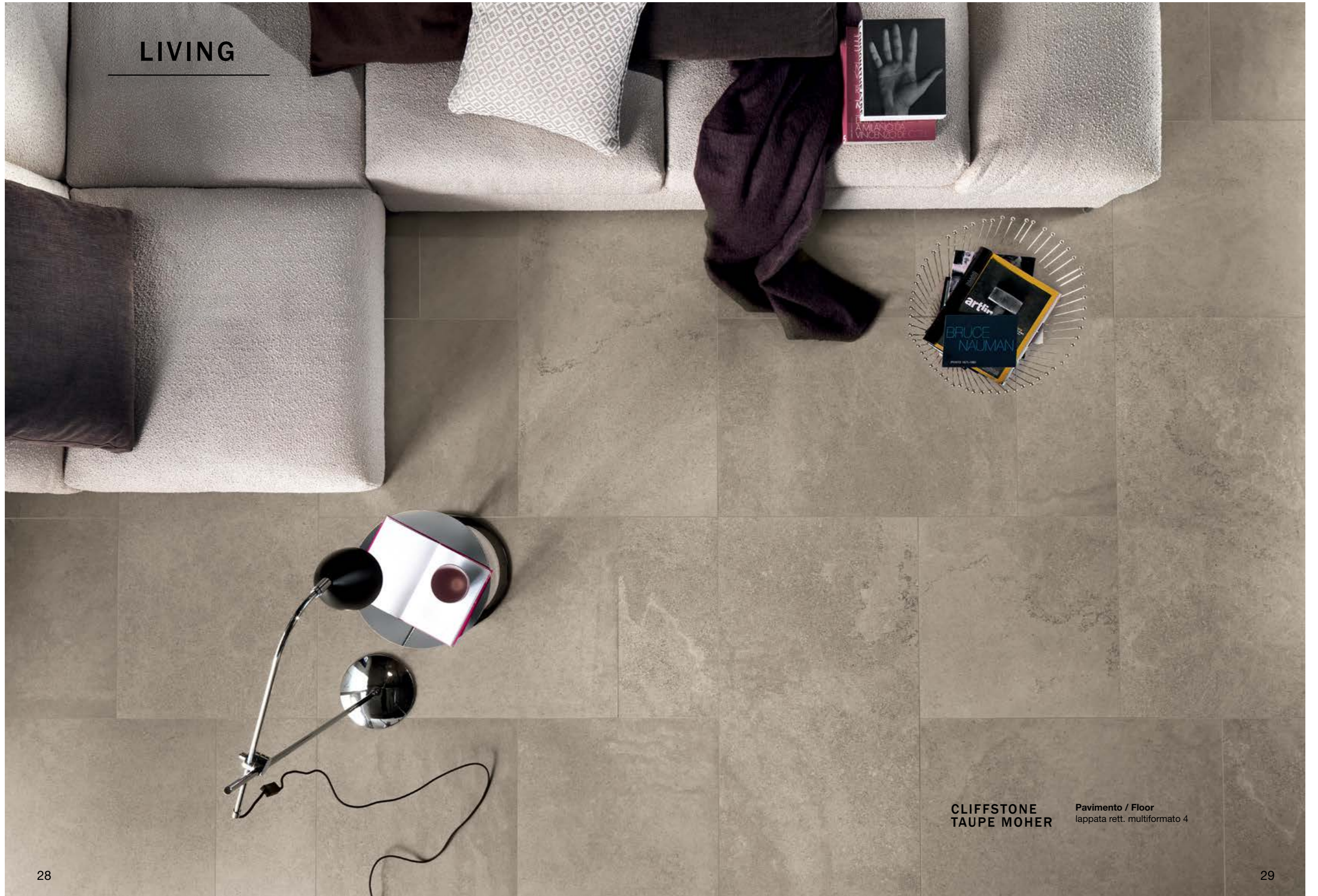


**CLIFFSTONE
GREY TENERIFE**

Parete / Wall
naturale rett. multifornato 5



LIVING



CLIFFSTONE
TAUPE MOHER

Pavimento / Floor
lappata rett. multiformato 4

La peculiarità del progetto è determinata dalla presenza di diverse finiture e dall'ampia scelta dei formati. Facilmente intuibili le possibilità di utilizzo soprattutto da parte dei progettisti, una libertà creativa nella progettazione architettonica che garantisce un'ampia personalizzazione.

The peculiarity of the design is defined by the presence of different finishes and the wide selection of sizes. The range of possible uses are easy to imagine especially by designers and confer a creative freedom in architectural design that ensures extensive personalisation.

CLIFFSTONE BEIGE MADEIRA

Pavimento / Floor
anticata rett. multiformato 5





**CLIFFSTONE
WHITE DOVER**

Pavimento / Floor
naturale rett. 90x90cm / 36"x36"

**CLIFFSTONE
GREY TENERIFE**

Pavimento / Floor
naturale rett. 90x90cm / 36"x36"



FORMATI E COLORI

SIZES AND COLORS_FORMATS ET COULEURS_FORMATE UND FARBEN

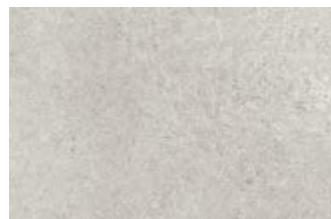
WHITE DOVER



20x60cm / 8"x24"
lapp. rett. (Spessore 10mm) LGKCLX3
nat. rett. (Spessore 10mm) LGKCL30
ant. rett. (Spessore 10mm) LGKCLA3



30x60cm / 12"x24"
lapp. rett. (Spessore 10mm) LGVCLX3
nat. rett. (Spessore 10mm) LGVCL30
ant. rett. (Spessore 10mm) LGVCLA3



40x60cm / 16"x24"
lapp. rett. (Spessore 10mm) LGJCLX3
nat. rett. (Spessore 10mm) LGJCL30
ant. rett. (Spessore 10mm) LGJCLA3



60x60cm / 24"x24"
lapp. rett. (Spessore 10mm) LGWCLX3
nat. rett. (Spessore 10mm) LGWCL31
ant. rett. (Spessore 10mm) LGWCLA3
grip rett. (Spessore 10mm) LGWCL35



60x90cm / 24"x36"
lapp. rett. (Spessore 10mm) LGACLX3
nat. rett. (Spessore 10mm) LGACL30
ant. rett. (Spessore 10mm) LGACLA3



90x90cm / 36"x36"
lapp. rett. (Spessore 11mm) LG9CL35
nat. rett. (Spessore 11mm) LG9CL31
ant. rett. (Spessore 11mm) LG9CLA3



60x120cm / 24"x48"
lapp. rett. (Spessore 10mm) LGXCLX3
nat. rett. (Spessore 10mm) LGXCL31
ant. rett. (Spessore 10mm) LGXCLA3

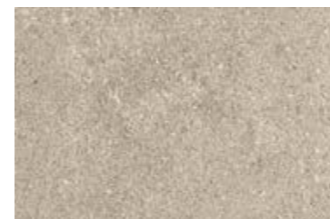
BEIGE MADEIRA



20x60cm / 8"x24"
lapp. rett. (Spessore 10mm) LGKCLX0
nat. rett. (Spessore 10mm) LGKCL00
ant. rett. (Spessore 10mm) LGKCLA0



30x60cm / 12"x24"
lapp. rett. (Spessore 10mm) LGVCLX0
nat. rett. (Spessore 10mm) LGVCL00
ant. rett. (Spessore 10mm) LGVCLA0



40x60cm / 16"x24"
lapp. rett. (Spessore 10mm) LGJCLX0
nat. rett. (Spessore 11mm) LGJCL00
ant. rett. (Spessore 11mm) LGJCLA0



60x60cm / 24"x24"
lapp. rett. (Spessore 10mm) LGWCLX0
nat. rett. (Spessore 10mm) LGWCL01
ant. rett. (Spessore 10mm) LGWCLA0
grip rett. (Spessore 10mm) LGWCL05



60x90cm / 24"x36"
lapp. rett. (Spessore 10mm) LGACLX0
nat. rett. (Spessore 10mm) LGACL00
ant. rett. (Spessore 10mm) LGACLA0



90x90cm / 36"x36"
lapp. rett. (Spessore 11mm) LG9CL05
nat. rett. (Spessore 11mm) LG9CL01
ant. rett. (Spessore 11mm) LG9CLA0



60x120cm / 24"x48"
lapp. rett. (Spessore 10mm) LGXCLX0
nat. rett. (Spessore 10mm) LGXCL01
ant. rett. (Spessore 10mm) LGXCLA0

FORMATI E COLORI

SIZES AND COLORS_FORMATS ET COULEURS_FORMATE UND FARBEN

TAUPE MOHER



20x60cm / 8"x24"
lapp. rett. (Spessore 10mm) LGKCLX2
nat. rett. (Spessore 10mm) LGKCL20
ant. rett. (Spessore 10mm) LGKCLA2



30x60cm / 12"x24"
lapp. rett. (Spessore 10mm) LGVCLX2
nat. rett. (Spessore 10mm) LGVCL20
ant. rett. (Spessore 10mm) LGVCLA2



40x60cm / 16"x24"
lapp. rett. (Spessore 10mm) LGJCLX2
nat. rett. (Spessore 10mm) LGJCL20
ant. rett. (Spessore 10mm) LGJCLA2



60x60cm / 24"x24"
lapp. rett. (Spessore 10mm) LGWCLX2
nat. rett. (Spessore 10mm) LGWCL21
ant. rett. (Spessore 10mm) LGWCLA2
grip rett. (Spessore 10mm) LGWCL25



60x90cm / 24"x36"
lapp. rett. (Spessore 10mm) LGACLX2
nat. rett. (Spessore 10mm) LGACL20
ant. rett. (Spessore 10mm) LGACLA2

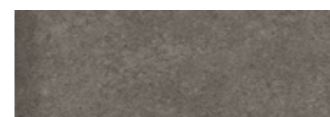


90x90cm / 36"x36"
lapp. rett. (Spessore 11mm) LG9CL25
nat. rett. (Spessore 11mm) LG9CL21
ant. rett. (Spessore 11mm) LG9CLA2



60x120cm / 24"x48"
lapp. rett. (Spessore 10mm) LGXCLX2
nat. rett. (Spessore 11mm) LGXCL21
ant. rett. (Spessore 11mm) LGXCLA2

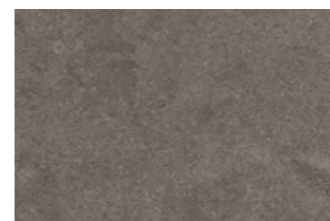
GREY TENERIFE



20x60cm / 8"x24"
lapp. rett. (Spessore 10mm) LGKCLX1
nat. rett. (Spessore 10mm) LGKCL10
ant. rett. (Spessore 10mm) LGKCLA1



30x60cm / 12"x24"
lapp. rett. (Spessore 10mm) LGVCLX1
nat. rett. (Spessore 10mm) LGVCL10
ant. rett. (Spessore 10mm) LGVCLA1



40x60cm / 16"x24"
lapp. rett. (Spessore 10mm) LGJCLX1
nat. rett. (Spessore 10mm) LGJCL10
ant. rett. (Spessore 10mm) LGJCLA1



60x60cm / 24"x24"
lapp. rett. (Spessore 10mm) LGWCLX1
nat. rett. (Spessore 10mm) LGWCL11
ant. rett. (Spessore 10mm) LGWCLA1
grip rett. (Spessore 10mm) LGWCL15



60x90cm / 24"x36"
lapp. rett. (Spessore 10mm) LGACLX1
nat. rett. (Spessore 10mm) LGACL10
ant. rett. (Spessore 10mm) LGACLA1



90x90cm / 36"x36"
lapp. rett. (Spessore 11mm) LG9CL15
nat. rett. (Spessore 11mm) LG9CL11
ant. rett. (Spessore 11mm) LG9CLA1



60x120cm / 24"x48"
lapp. rett. (Spessore 10mm) LGXCLX1
nat. rett. (Spessore 10mm) LGXCL11
ant. rett. (Spessore 10mm) LGXCLA1

MULTIFORMATO 4

60x120cm - 60x90cm - 60x60cm - 30x60cm / 24"x48" - 24"x36" - 24"x24" - 12"x24"



WHITE DOVER

lapp. rett. (spessore 10mm)
nat. rett. (spessore 10mm)
ant. rett. (spessore 10mm)

LG9CLWL
LG9CLWN
LG9CLW4

BEIGE MADEIRA

lapp. rett. (spessore 10mm)
nat. rett. (spessore 10mm)
ant. rett. (spessore 10mm)

LG9CLBL
LG9CLBN
LG9CLB4

TAUPE MOHER

lapp. rett. (spessore 10mm)
nat. rett. (spessore 10mm)
ant. rett. (spessore 10mm)

LG9CLTL
LG9CLTN
LG9CLT4

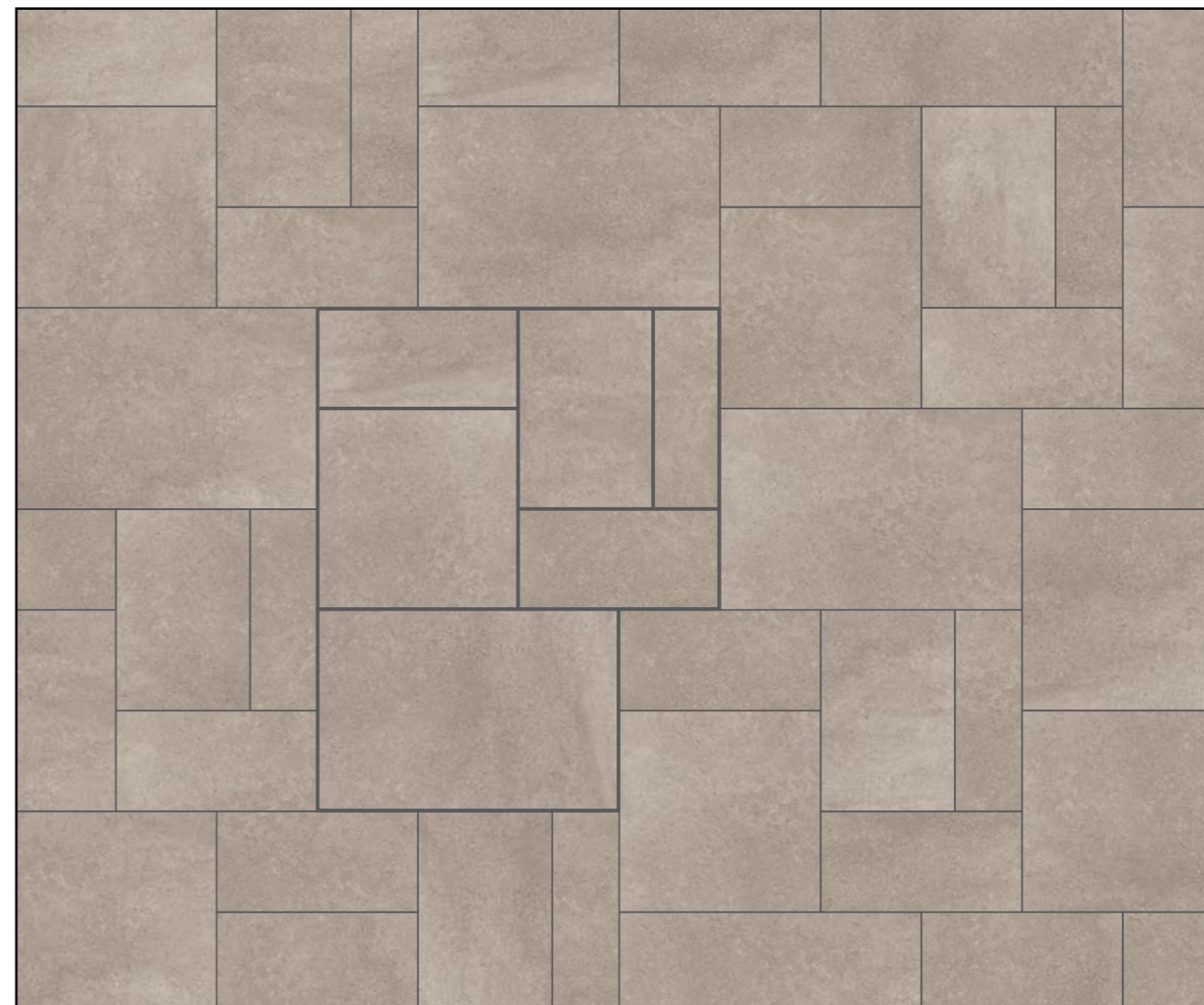
GREY TENERIFE

lapp. rett. (spessore 10mm)
nat. rett. (spessore 10mm)
ant. rett. (spessore 10mm)

LG9CLGL
LG9CLGN
LG9CLG4

MULTIFORMATO 5

60x90cm - 60x60cm - 40x60cm - 30x60cm - 20x60cm / 24"x36" - 24"x24" - 16"x24" - 12"x24" - 8"x24"



WHITE DOVER

lapp. rett. (spessore 10mm)
nat. rett. (spessore 10mm)
ant. rett. (spessore 10mm)

LG9CLW5
LG9CL5W
LG9CLWA

BEIGE MADEIRA

lapp. rett. (spessore 10mm)
nat. rett. (spessore 10mm)
ant. rett. (spessore 10mm)

LG9CLB5
LG9CL5B
LG9CLBA

TAUPE MOHER

lapp. rett. (spessore 10mm)
nat. rett. (spessore 10mm)
ant. rett. (spessore 10mm)

LG9CLT5
LG9CL5T
LG9CLTA

GREY TENERIFE

lapp. rett. (spessore 10mm)
nat. rett. (spessore 10mm)
ant. rett. (spessore 10mm)

LG9CLG5
LG9CL5N
LG9CLGA

WHITE DOVER



60x60cm / 24"x24"
rett. (Spessore 20mm) LGWK287
60,4x60,4cm / 24"x24"
nat. (Spessore 20mm) LGWK286

BEIGE MADEIRA



60x60cm / 24"x24"
rett. (Spessore 20mm) LGWK281
60,4x60,4cm / 24"x24"
nat. (Spessore 20mm) LGWK280

TAUPE MOHER



60x60cm / 24"x24"
rett. (Spessore 20mm) LGWK285
60,4x60,4cm / 24"x24"
nat. (Spessore 20mm) LGWK284

GREY TENERIFE



60x60cm / 24"x24"
rett. (Spessore 20mm) LGWK283
60,4x60,4cm / 24"x24"
nat. (Spessore 20mm) LGWK282



MURETTO
30x60cm / 12"x24"
white dover lapp. LGVCLM3



MOSAICO 16
30x30cm / 12"x12"
white dover lapp. LG9CLM3



MURETTO
30x60cm / 12"x24"
beige madeira lapp. LGVCLM0



MOSAICO 16
30x30cm / 12"x12"
beige madeira lapp. LG9CLM0



MURETTO
30x60cm / 12"x24"
taupe moher lapp. LGVCLM2



MOSAICO 16
30x30cm / 12"x12"
taupe moher lapp. LG9CLM2



MURETTO
30x60cm / 12"x24"
grey tenerife lapp. LGVCLM1



MOSAICO 16
30x30cm / 12"x12"
grey tenerife lapp. LG9CLM1

LAPPATA

ANGOLO SX GRADINO PLUS lapp. rett.*
35x120cm / 13^{3/4}"x48"
white dover LG8CLC7
beige madeira LG8CLC1
taupe moher LG8CLC5
grey tenerife LG8CLC3

GRADINO PLUS lapp. rett.*
35x120cm / 13^{3/4}"x48"
white dover LG8CLX3
beige madeira LG8CLX0
taupe moher LG8CLX2
grey tenerife LG8CLX1

ANGOLO DX GRADINO PLUS lapp. rett.*
35x120cm / 13^{3/4}"x48"
white dover LG8CLC6
beige madeira LG8CLC0
taupe moher LG8CLC4
grey tenerife LG8CLC2

BATTISCOPA lapp. rett.
10x60cm / 4"x24"
white dover LGBCLX3
beige madeira LGBCLX0
taupe moher LGBCLX2
grey tenerife LGBCLX1

NATURALE

ANGOLO SX GRADINO PLUS nat. rett.*
35x120cm / 13^{3/4}"x48"
white dover LG8CL32
beige madeira LG8CL02
taupe moher LG8CL22
grey tenerife LG8CL12

GRADINO PLUS nat. rett.*
35x120cm / 13^{3/4}"x48"
white dover LG8CL30
beige madeira LG8CL00
taupe moher LG8CL20
grey tenerife LG8CL10

ANGOLO DX GRADINO PLUS nat. rett.*
35x120cm / 13^{3/4}"x48"
white dover LG8CL31
beige madeira LG8CL01
taupe moher LG8CL21
grey tenerife LG8CL11

BATTISCOPA nat. rett.
10x60cm / 4"x24"
white dover LGBCL30
beige madeira LGBCL00
taupe moher LGBCL20
grey tenerife LGBCL10

ANTICATA

ANGOLO SX GRADINO PLUS ant. rett.*
35x120cm / 13^{3/4}"x48"
white dover LG8CLB7
beige madeira LG8CLB1
taupe moher LG8CLB5
grey tenerife LG8CLB3

GRADINO PLUS ant. rett.*
35x120cm / 13^{3/4}"x48"
white dover LG8CLA3
beige madeira LG8CLA0
taupe moher LG8CLA2
grey tenerife LG8CLA1

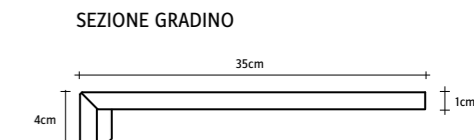
ANGOLO DX GRADINO PLUS ant. rett.*
35x120cm / 13^{3/4}"x48"
white dover LG8CLB6
beige madeira LG8CLB0
taupe moher LG8CLB4
grey tenerife LG8CLB2

BATTISCOPA ant. rett.
10x60cm / 4"x24"
white dover LGBCLA3
beige madeira LGBCLA0
taupe moher LGBCLA2
grey tenerife LGBCLA1

GRIP

ANGOLO GRADINO PLUS grip rett.*
35x35cm / 13^{3/4}"x13^{3/4}"
white dover LG2CL31
beige madeira LG2CL01
taupe moher LG2CL21
grey tenerife LG2CL11

GRADINO PLUS grip rett.*
35x60cm / 13^{3/4}"x24"
white dover LG2CL30
beige madeira LG2CL00
taupe moher LG2CL20
grey tenerife LG2CL10








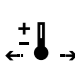






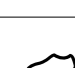
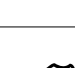

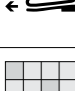
CLIFFSTONE

gres tutta massa UGL

full-body porcelain
grès cérame en pleine masse
vollgemischtes durchgefärbtes feinsteinzeug

spessore 10mm / 11mm / 20mm

thickness
épaisseur
stärke









CARATTERISTICHE TECNICHE* TECHNICAL CHARACTERISTICS CARACTÉRISTIQUES TECHNIQUES TECHNISCHE EIGENSCHAFTEN	metodo di prova test method methode d'essai prüfmethode	valori medi average values valeurs moyens durchschnittliche werte
 assorbimento d'acqua (E) water absorption (E) absorption d'eau (E) wasserabsorption (E)	ISO 10545-3	≤ 0,04%
 resistenza al gelo frost resistance résistance au gel frostbeständigkeit	ISO 10545-12	resistente résistant beständig
 resistenza alla flessione bending strength résistance à la flexion beugefestigkeit	ISO 10545-4	≥ 50 N/mm ²
 sforzo di rottura (S) breaking strength (S) chargement de rupture (S) bruchlast (S)	ISO 10545-4	spess. 10mm: ≥ 2'500 N spess. 11mm: ≥ 3'000 N spess. 20mm: ≥ 13'600 N
 resistenza all'abrasione profonda résistance to deep abrasion résistance à l'abrasion profonde widerstand gegen tiefenabrieb	ISO 10545-6	≤ 145 mm ³
 dilatazione termica lineare thermal expansion dilatation thermique linéaire thermische dilatation	ISO 10545-8	α ≤ 7x10 ⁻⁶ °C ⁻¹
 resistenza agli sbalzi termici thermal shock resistance résistance aux chocs thermiques temperatur wechselbeständigkeit	ISO 10545-9	resistente résistant beständig
 resistenza attacco chimico chemical resistance résistance chimique chemische beständigkeit	ISO 10545-13	UHA, ULA resistente résistant beständig
 resistenza alle macchie stain resistance résistance aux taches fleckenbeständigkeit	ISO 10545-14	5 resistente résistant beständig
 resistenza allo scivolamento slip resistance résistance au glissement rutschfestigkeit	DIN 51130	R10 (nat. / ant.) R11 (grip / 20mm)
 resistenza allo scivolamento slip resistance résistance au glissement rutschfestigkeit	DIN 51097	B (A+B) (nat. / ant.) C (A+B+C) (grip / 20mm)
 coefficiente di attrito dinamico dynamic friction coefficient coefficient de friction dynamique dynamischer reibungskoeffizient	B.C.R. tortus	μ > 0,40
 dynamic coefficient of friction (DCOF)	ANSI A 137.1:2012	DCOF ≥ 0.42
 wet pendulum test AUS	AS 4586:2013	class P3(X) (nat. / ant.) class P4(W) (grip / 20mm)
 pendulum test UK	BS 7976:2002	slider 96 wet: 36+ (nat. / ant.) slider 55 wet: 36+ (grip / 20mm)
 stonalizzazione shading denuançage spiefarbig		V2

*ISO 13006-G Bla UGL – EN 14411-G Bla UGL – ANSI A 137.1 (Un glazed Porcelain Tiles - Class P1)

IMPIEGHI USES EMPLOI ANWENDUNGSBEREICHE

 alberghi hotels hotels hotels	 locali pubblici public spaces lieux publics öffentliche bereiche
 abitazioni housing maisons wohnbereiche	 aeroporti airports aéroports flughafen
 bar - ristoranti bar - restaurants bar - restaurants cafés - restaurants, gasthäuser	 centri commerciali malls centre commerciaux einkaufszentren
 negozi shops magasins geschäfte	 stazioni train stations gares bahnhöfe

IMPIEGHI 20mm USES EMPLOI ANWENDUNGSBEREICHE

 vialezzi walkways allées Kleine Wege	 parcheggi parking areas parkings Parkplätze
 parchi pubblici - giardini public parks - jardins parcs publics et jardins Öffentliche Parks und Gärten	 terrazze terraces terrasses Terrassen
 camminamenti piscine pool decks voies piétonnes et piscines Wege und Schwimmbäder	 zone industriali industrial areas zones industrielles Industriebereiche
 stabilimenti balneari beach resorts établissements balnéaires Badeanstalten	 aree urbane urban areas zones urbaines Stadtgebiete

IMBALLAGGI PACKING EMBALLAGE VERPACKUNGEN

articolo	scatola			europallet		
	pz.	mq	kg	scat.	mq	kg
fondo 60x120 24"x48"	2	1,44	35,5	15	21,6	532,5
fondo 90x90 36"x36"	2	1,62	40,0	15	24,3	600,0
fondo 60x90 24"x36"	3	1,62	40,0	30	48,6	1200,0
fondo 20mm 60,4x60,4 24"x24"	2	0,73	33,5	32	23,3	1072,0
fondo 20mm 60x60 24"x24"	2	0,72	32,5	32	23,0	1040,0
fondo 60x60 24"x24"	4	1,44	32,5	32	46,1	1040,0
fondo 40x60 16"x24"	4	0,96	21,6	24	23,0	518,4
fondo 30x60 12"x24"	8	1,44	32,5	32	46,1	1040,0
fondo 20x60 8"x24"	8	0,96	21,6	48	46,1	1037,0
mosaico muretto 30x60 12"x24"	4	0,72	15,6	30	21,6	468,0
mosaico 16 30x30 12"x12"	5	0,45	10,0	60	27,0	600,0
battiscopa 10x60 4"x24"	12	7,2 m.l.	16,0	60	432,0 m.l.	960,0
gradino plus 35x120 13 3/4"x48"	2	0,84	23,2	16	13,4	371,2
angolo gradino plus 35x120 13 3/4"x48"	1	0,42	12,4	16	6,7	198,4
gradino plus 35x60 13 3/4"x24"	4	0,84	21,2	16	13,4	339,2
angolo gradino plus 35x35 13 3/4"x13 3/4"	2	0,25	6,7	36	8,8	241,2



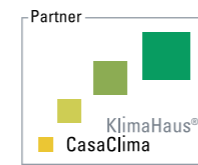
ISO 14001



ISO 9001



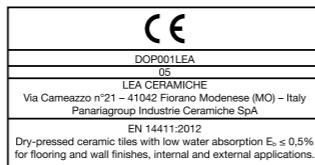
emas



casaclima



leed



marchio CE



leed

*** CASACLIMA
Lea Ceramiche, tramite la holding Panariagroup Industrie Ceramiche S.p.A., ha ottenuto la certificazione Partner Casaclima. Through Panariagroup Industrie Ceramiche S.p.A., Lea Ceramiche has obtained the Partner Casaclima certification. Par le biais de Panariagroup Industrie Ceramiche S.p.A., Lea Ceramiche a obtenu la certification Partner Casaclima. Lea Ceramiche, durch die Holding Panariagroup Industrie Ceramiche S.p.A., hat die Bescheinigung als Partner Casaclima bekommen. Lea Ceramiche, a través del holding Panariagroup Industrie Ceramiche S.p.A., ha obtenido la certificación Partner Casaclima.

* LEED
Lea Ceramiche, tramite la holding Panariagroup Industrie Ceramiche S.p.A., è socio ordinario del Green Building Council e del GBC Italia. Through Panariagroup Industrie Ceramiche S.p.A., Lea Ceramiche is an ordinary member of the Green Building Council and the GBC Italia. Par le biais de Panariagroup Industrie Ceramiche S.p.A., Lea Ceramiche est membre ordinaire du Green Building Council et du GBC Italia. Lea Ceramiche, durch die Holding Panariagroup Industrie Ceramiche S.p.A., ist ordentliches Mitglied von dem Green Building Council und dem GBC Italien. Lea Ceramiche, a través del holding Panariagroup Industrie Ceramiche S.p.A., es miembro afiliado del Consejo Construcción Verde y del Consejo Construcción Verde de Italia.

** LEED
Il contenuto di materiale riciclato "pre-consumo" della serie Cliffstone è del 40%, come certificato da ente esterno qualificato (certificato disponibile sul sito www.ceramichelea.com). Cliffstone is produced with 40% of pre-consumer materials, as certified by a qualified external company (certificate available on the website www.ceramichelea.com).



**LEA CERAMICHE HA SCELTO MICROBAN®,
IL LEADER MONDIALE NELLA PROTEZIONE ANTIBATTERICA**
*LEA CERAMICHE CHOOSES MICROBAN®,
THE GLOBAL LEADER IN ANTIMICROBIAL TECHNOLOGY*

PROTEZIONE 24 ORE SU 24
24/7 COVERAGE

EFFICACE CONTRO MACCHIE E ODORI CHE CAUSANO BATTERI
EFFECTIVE AGAINST STAIN AND ODOR CAUSING BACTERIA

MOLTEPLICI APPLICAZIONI ED UTILIZZI
MULTIPLE APPLICATIONS

TRATTAMENTO PERMANENTE
PERMANENT PROTECTION

INTEGRATA NELLA PIASTRELLA
INTEGRATED IN THE TILE

EFFICACE SU OGNI SUPERFICIE
EFFICIENT ON ANY SURFACE

CLIFFSTONE

MATERIA
RITROVATA
rediscovered
material



LEA

CERAMICHE

LEA CERAMICHE
Via Cameazzo, 21
41042 Fiorano Modenese
Modena Italy

Tel +39 0536 837811
Fax +39 0536 830326
info@ceramichelea.it
www.ceramichelea.com

Panariagroup Industrie Ceramiche
S.p.A.

SHOWROOM LEA CERAMICHE
Via Durini, 3
20122 Milano

Tel +39 02 76011406
showroom_milano@ceramichelea.it

LEA NORTH AMERICA, LLC
800 Clanton Road, Suite N
Charlotte, NC 28217

Tel +1 704 522 6300
Fax +1 704 522 6080
info@leausa.us
www.leausa.us