

DISTRICT

NEW CONCRETE



LEA
CERAMICHE

**SUPERFICI
CONTEMPORANEE**

Contemporary
style



DISTRICT

4 COLORI
street
avenue
boulevard
route

4 COLORS
street
avenue
boulevard
route

2 FINITURE
naturale
grip

2 FINISHES
naturale
grip

4 FORMATI
90x90cm
45x90cm
60x60cm
30x60cm

4 SIZES
36"x36"
18"x36"
24"x24"
12"x24"





BATHROOM

DISTRICT BOULEVARD

Pavimento / Floor
nat. rett. 60x60cm / 24"x24"

Parete / Wall
nat. rett. 30x60cm / 12"x24"
Kensington Brick Mauve 31x62cm / 12¹/₄"x24¹/₂"

La collezione in gres District rappresenta il connubio perfetto tra performance tecnica e ricerca estetica. I moduli posati a terra e lungo le pareti conferiscono alle superfici un segno contemporaneo, garantendo funzionalità e prestazioni tecniche.

The District porcelain stoneware collection represents the perfect union of technical performance and aesthetical research. The tiles laid on floors and walls give the surfaces a contemporary touch, ensuring functionality and technical performances.



Parete / Wall
nat. rett. 30x60cm / 12"x24"





**DISTRICT
CENTRAL PARK AVENUE**

Parete / Wall
30x30cm / 12"x12"



DISTRICT STREET

Pavimento / Floor
nat. rett. 90x90cm / 36"x36"

District è disponibile in quattro formati con moduli dalle dimensioni anche importanti, 90x90cm e 45x90cm. Una nuova proposta dal gusto metropolitano con cui i progettisti possono esprimere la propria creatività progettuale anche per spazi contract.

District is available in four sizes, even in large formats, up to 90x90cm and 45x90cm. A new proposal that has a metropolitan style with which designers can express their creativity even in non-residential projects.

**DISTRICT
MOMA STREET**

Pavimento / Floor
moma 60x60cm / 24"x24"



PUBLIC AREAS



DISTRICT
ROUTE

Pavimento / Floor
nat. rett. 45x90cm / 18"x36"

**DISTRICT
ROUTE**

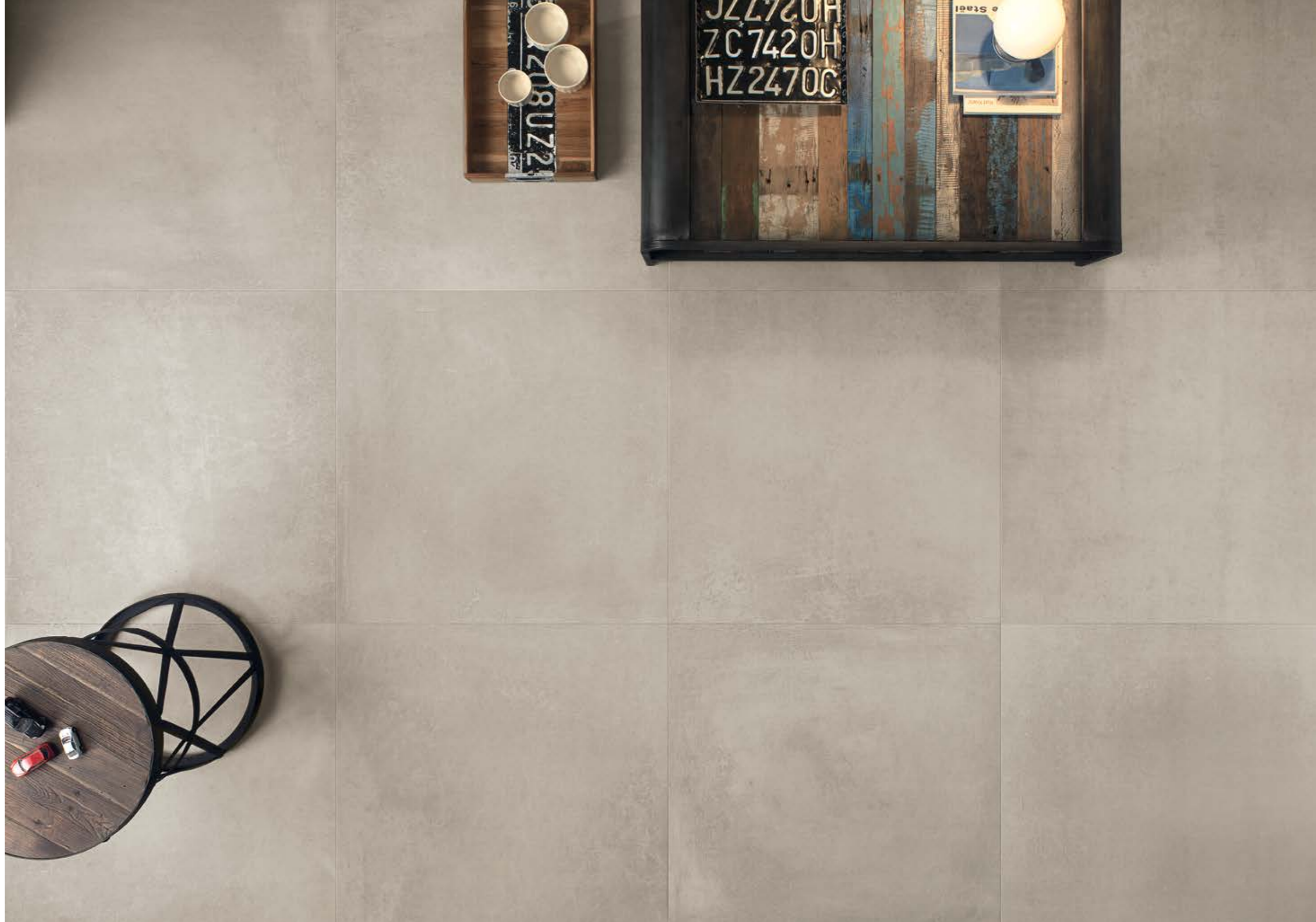
Pavimento / Floor
nat. rett. 45x90cm / 18"x36"



DISTRICT
QUEENS MIX ROUTE

Parete / Wall
30x30cm / 12"x12"





**DISTRICT
STREET**

Pavimento / Floor
nat. rett. 90x90cm / 36"x36"

LIVING



**DISTRICT
BOULEVARD**

Pavimento / Floor
nat. rett. 90x90cm / 36"x36"



**DISTRICT
METROPOLITAN BOULEVARD**

Pavimento / Floor
60x60cm / 24"x24"



DISTRICT
ROUTE

Pavimento / Floor
nat. rett. 90x90cm / 36"x36"

STREET



30x60cm / 12"x24"
nat. rett. (spessore 10mm) LGVDS30



60x60cm / 24"x24"
nat. rett. (spessore 10mm) LGWDS30
grip rett. (spessore 10mm) LGWDS35

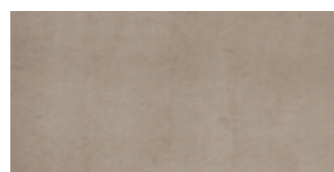


45x90cm / 18"x36"
nat rett. (spessore 11mm) LGGDS30



90x90cm / 36"x36"
nat rett. (spessore 11mm) LG9DS30

AVENUE



30x60cm / 12"x24"
nat. rett. (spessore 10mm) LGVDS00



60x60cm / 24"x24"
nat. rett. (spessore 10mm) LGWDS00
grip rett. (spessore 10mm) LGWDS05

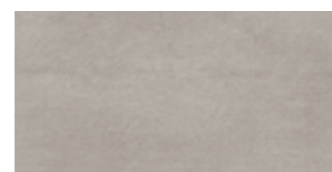


45x90cm / 18"x36"
nat rett. (spessore 11mm) LGGDS00



90x90cm / 36"x36"
nat rett. (spessore 11mm) LG9DS00

BOULEVARD



30x60cm / 12"x24"
nat. rett. (spessore 10mm) LGVDS10



60x60cm / 24"x24"
nat. rett. (spessore 10mm) LGWDS10
grip rett. (spessore 10mm) LGWDS15

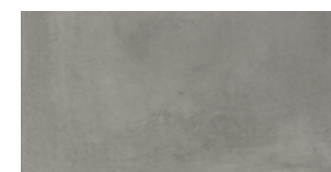


45x90cm / 18"x36"
nat rett. (spessore 11mm) LGGDS10



90x90cm / 36"x36"
nat rett. (spessore 11mm) LG9DS10

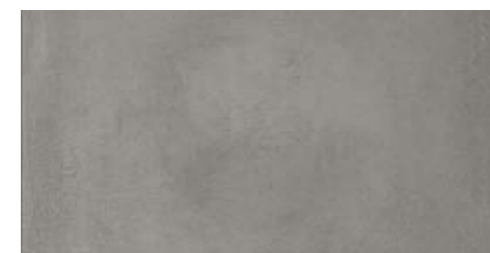
ROUTE



30x60cm / 12"x24"
nat. rett. (spessore 10mm) LGVDS20



60x60cm / 24"x24"
nat. rett. (spessore 10mm) LGWDS20
grip rett. (spessore 10mm) LGWDS25



45x90cm / 18"x36"
nat rett. (spessore 11mm) LGGDS20



90x90cm / 36"x36"
nat rett. (spessore 11mm) LG9DS20



DECORO MURETTO
30x60cm / 12"x24"
street LGVDS83



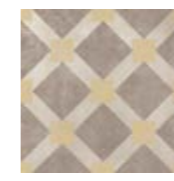
MOSAICO 81
30x30cm / 12"x12"
street LG9DS83



MOSAICO MATTONE
30x30cm / 12"x12"
street LG9DS93



CENTRAL PARK
30x30cm / 12"x12"
street LGPDS3



BRYANT PARK
30x30cm / 12"x12"
street LGPDS30



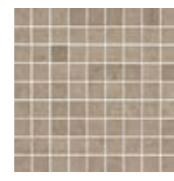
QUEENS MIX
30x30cm / 12"x12"
street



LGPDSQ3



DECORO MURETTO
30x60cm / 12"x24"
avenue LGVDS80



MOSAICO 81
30x30cm / 12"x12"
avenue LG9DS80



MOSAICO MATTONE
30x30cm / 12"x12"
avenue LG9DS90



CENTRAL PARK
30x30cm / 12"x12"
avenue LGPDS0



BRYANT PARK
30x30cm / 12"x12"
avenue LGPDS00



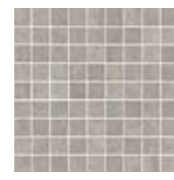
QUEENS MIX
30x30cm / 12"x12"
avenue



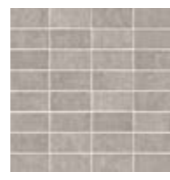
LGPDSQ0



DECORO MURETTO
30x60cm / 12"x24"
boulevard LGVDS81



MOSAICO 81
30x30cm / 12"x12"
boulevard LG9DS81



MOSAICO MATTONE
30x30cm / 12"x12"
boulevard LG9DS91



CENTRAL PARK
30x30cm / 12"x12"
boulevard LGPDS1



BRYANT PARK
30x30cm / 12"x12"
boulevard LGPDS10



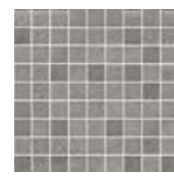
QUEENS MIX
30x30cm / 12"x12"
boulevard



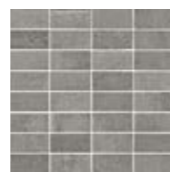
LGPDSQ1



DECORO MURETTO
30x60cm / 12"x24"
route LGVDS82



MOSAICO 81
30x30cm / 12"x12"
route LG9DS82



MOSAICO MATTONE
30x30cm / 12"x12"
route LG9DS92



CENTRAL PARK
30x30cm / 12"x12"
route LGPDS2



BRYANT PARK
30x30cm / 12"x12"
route LGPDS20



QUEENS MIX
30x30cm / 12"x12"
route



LGPDSQ2



METROPOLITAN
60x60cm / 24"x24"
street LGWDST3



GUGGENHEIM
60x60cm / 24"x24"
street LGWDSH3



MOMA
60x60cm / 24"x24"
street LGWDSM3



METROPOLITAN
60x60cm / 24"x24"
avenue LGWDST0



GUGGENHEIM
60x60cm / 24"x24"
avenue LGWDSH0



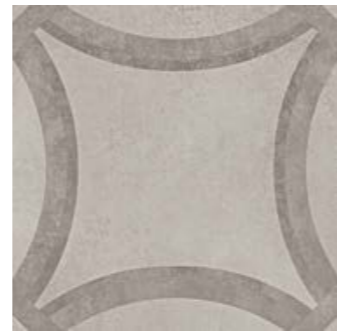
MOMA
60x60cm / 24"x24"
avenue LGWDSM0



METROPOLITAN
60x60cm / 24"x24"
boulevard LGWDST1



GUGGENHEIM
60x60cm / 24"x24"
boulevard LGWDSH1



MOMA
60x60cm / 24"x24"
boulevard LGWDSM1



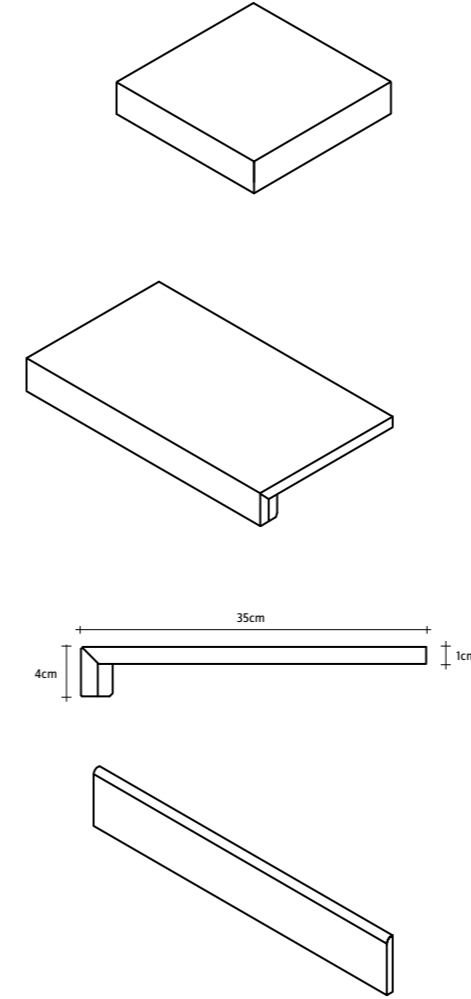
METROPOLITAN
60x60cm / 24"x24"
route LGWDST2



GUGGENHEIM
60x60cm / 24"x24"
route LGWDSH2



MOMA
60x60cm / 24"x24"
route LGWDSM2



NATURALE

ANGOLO GRADINO PLUS nat.*
35x35cm / 13^{3/4}"x13^{3/4}"
street LG9DSA3
avenue LG9DSA0
boulevard LG9DSA1
route LG9DSA2

GRADINO PLUS nat.*
35x60cm / 13^{3/4}"x24"
street LG9DSG3
avenue LG9DSG0
boulevard LG9DSG1
route LG9DSG2

BATTISCOPA nat.
10x60cm / 4"x24"
street LGBDS30
avenue LGBDS00
boulevard LGBDS10
route LGBDS20

GRIP

ANGOLO GRADINO PLUS grip*
35x35cm / 13^{3/4}"x13^{3/4}"
street LG9DSA8
avenue LG9DSA5
boulevard LG9DSA6
route LG9DSA7

GRADINO PLUS grip*
35x60cm / 13^{3/4}"x24"
street LG9DSG8
avenue LG9DSG5
boulevard LG9DSG6
route LG9DSG7

*su richiesta. Per maggiori informazioni circa quantità minime e tempi di consegna rivolgersi all'ufficio commerciale.
upon request. For more information about minimum quantities and delivery times please contact the sales department.
sur demande. Pour plus d'informations sur les quantités minimales et délais de livraison s'il vous plaît contacter le département des ventes.
auf Anfrage. Für weitere Infos über die Mindestmengen und Lieferzeiten wenden Sie sich bitte an unserer Verkaufsabteilung.

DISTRICT

gres tutta massa UGL









full-body porcelain
grès cérame en pleine masse
vollgemischtes durchgefärbtes feisteinzeug

spessore 10mm / 11mm

thickness
épaisseur
stärke

CARATTERISTICHE TECNICHE* TECHNICAL CHARACTERISTICS CARACTÉRISTIQUES TECHNIQUES TECHNISCHE EIGENSCHAFTEN	metodo di prova test method methode d'essai prüfmethode	valori medi average values valeurs moyens durchschnittliche werte
 assorbimento d'acqua (E) water absorption (E) absorption d'eau (E) wasserabsorption (E)	ISO 10545-3	≤ 0,04%
 resistenza al gelo frost resistance résistance au gel frostbeständigkeit	ISO 10545-12	resistente résistant beständig
 resistenza alla flessione bending strength résistance à la flexion beigefestigkeit	ISO 10545-4	≥ 50 N/mm ²
 sfuerzo di rottura (S) breaking strength (S) chargement de rupture (S) bruchlast (S)	ISO 10545-4	spess. 10mm: ≥ 2500 N spess. 11mm: ≥ 3000 N
 resistenza all'abrasione profonda résistance to deep abrasion résistance à l'abrasion profonde widerstand gegen tiefenabrier	ISO 10545-6	≤ 145 mm ³
 dilatazione termica lineare thermal expansion dilatation thermique linéaire thermische dilatation	ISO 10545-8	$\alpha \leq 7 \times 10^{-6} \text{ } ^\circ\text{C}^{-1}$
 resistenza agli sbalzi termici thermal shock resistance résistance aux chocs thermiques temperatur wechselbeständigkeit	ISO 10545-9	resistente résistant beständig
 resistenza attacco chimico chemical resistance résistance chimique chemischee beständigkeit	ISO 10545-13	UHA, ULA resistente résistant beständig
 resistenza alle macchie stain resistance résistance aux taches fleckenbeständigkeit	ISO 10545-14	5 resistente résistant beständig
 resistenza allo scivolamento slip resistance résistance au glissement rutschfestigkeit	DIN 51130	R10 (nat.) R11 (grip)
 resistenza allo scivolamento slip resistance résistance au glissement rutschfestigkeit	DIN 51097	B (A+B) (nat.) C (A+B+C) (grip)
 coefficiente di attrito dinamico dynamic friction coefficient coefficient de friction dynamique dynamischer reibungskoeffizient	B.C.R. tortus	$\mu > 0,40$
 dynamic coefficient of friction (DCOF)	ANSI A 137.1:2012	DCOF ≥ 0.42
 wet pendulum test AUS	AS 4586:2013	class P4(W) (grip)
 pendulum test UK	BS 7976:2002	slider 96 wet: 36+ (grip) slider 55 wet: 36+ (grip)
 stonalizzazione shading denuançage spieifarbig		V3

*ISO 13006-G Bla UGL – EN 14411-G Bla UGL – ANSI A 137.1 (Un glazed Porcelain Tiles - Class P1)

IMPIEGHI USES EMPLOI ANWENDUNGSBEREICHE	
 alberghi hotels hotels hotels	 locali pubblici public spaces lieux publics öffentliche bereiche
 abitazioni housing maisons wohnbereiche	 aeroporti airports aéroports flughafen
 bar - ristoranti bar - restaurants bar - restaurants cafés - restaurants, gasthäuser	 centri commerciali malls centre commerciaux einkaufszentren
 negozi shops magasins geschäfte	 stazioni train stations gares bahnhöfe

IMBALLAGGI PACKING EMBALLAGE VERPACKUNGEN

articolo	scatola			europallet				
	pz.	mq	kg	scat.	mq	kg		
fondo	90x90	36"x36"	2	1,62	40,0	15	24,3	600,0
fondo	45x90	18"x36"	3	1,22	30,0	30	36,5	900,0
fondo	60x60	24"x24"	4	1,44	33,0	32	46,1	1056,0
fondo	30x60	12"x24"	8	1,44	33,0	32	46,1	1056,0
decoro metropolitan	60x60	24"x24"	2	0,72	18,0	20	14,4	360,0
decoro guggenheim	60x60	24"x24"	2	0,72	18,0	20	14,4	360,0
decoro moma	60x60	24"x24"	2	0,72	18,0	20	14,4	360,0
decoro central park	30x30	12"x12"	4	0,36	9,0	60	21,6	540,0
decoro bryant park	30x30	12"x12"	4	0,36	9,0	60	21,6	540,0
decoro queens mix	30x30	12"x12"	4	0,36	9,0	60	21,6	540,0
mosaico muretto	30x60	12"x24"	4	0,72	15,6	30	21,6	468,0
mosaico 81	30x30	12"x12"	5	0,45	10,0	60	27,0	600,0
mosaico mattone	30x30	12"x12"	5	0,45	10,0	60	27,0	600,0
battiscopa	10x60	4"x24"	12	7,2 m.l.	16,0	60	432,0 m.l.	960,0
gradino plus	35x60	13 ³ / ₄ "x24"	4	0,84	21,2	16	13,4	339,2
angolo gradino plus	35x35	13 ³ / ₄ "x13 ³ / ₄ "	2	0,25	8,0	24	5,9	192,0

Le rappresentazioni fotografiche e descrittive dei prodotti di Lea Ceramiche riportate sui depliant, sui cataloghi e sugli altri materiali pubblicitari dell'azienda, sono puramente illustrative dello specifico prodotto rappresentato. Si precisa infatti che, successivamente alla pubblicazione dei materiali pubblicitari dell'azienda, il prodotto potrebbe subire leggere modifiche nel relativo processo produttivo, al fine di renderlo tecnologicamente migliore. Tali aggiustamenti tecnologici potrebbero determinare lievi differenze, anche estetiche e/o cromatiche, nel prodotto medesimo, con la conseguenza che lo stesso potrebbe risultare diverso da come rappresentato e/o illustrato e/o descritto nel materiale pubblicitario di Lea Ceramiche. Tali differenze non potranno essere in alcun modo considerate dall'acquirente un vizio e/o difetto del materiale ceramico stesso, bensì una caratteristica dello specifico prodotto. Tutti i materiali ceramici che imitano pietre naturali presentano differenze di colore e sfumature che non potranno in nessun modo essere considerate quale difetto del prodotto, ma bensì una qualità caratteristica di tali tipi di produzione.

The photographs and descriptions of Lea Ceramiche products given in the brochures, catalogues and other corporate advertising materials aim merely to represent the specific products. After the publication of the corporate advertising materials, the products may be slightly modified as a result of technological improvements. Such technological modifications may lead to slight differences in appearance and/or colour of the products, which may therefore differ from the representations, illustrations or descriptions given in the Lea Ceramiche advertising materials. Such differences shall in no way be deemed to be faults and/or defects in the ceramic materials, but rather intrinsic features of the specific products. All ceramic materials that imitate natural stone differ in color and nuances, and this cannot any in way be considered as a product defect, but rather a characteristic of these types of products.



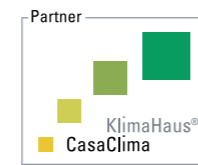
ISO 14001



ISO 9001



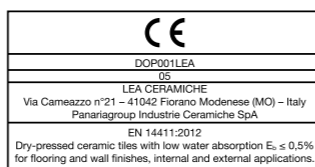
emas



casaclima



leed



marchio CE



leed

*** CASACLIMA
Lea Ceramiche, tramite la holding Panariagroup Industrie Ceramiche S.p.A., ha ottenuto la certificazione Partner Casaclima. Through Panariagroup Industrie Ceramiche S.p.A., Lea Ceramiche has obtained the Partner Casaclima certification. Par le biais de Panariagroup Industrie Ceramiche S.p.A., Lea Ceramiche a obtenu la certification Partner Casaclima. Lea Ceramiche, durch die Holding Panariagroup Industrie Ceramiche S.p.A., hat die Bescheinigung als Partner Casaclima bekommen. Lea Ceramiche, a través del holding Panariagroup Industrie Ceramiche S.p.A., ha obtenido la certificación Partner Casaclima.

** LEED
Il contenuto di materiale riciclato "pre-consumo" della serie District è del 40%, come certificato da ente esterno qualificato (certificato disponibile sul sito www.ceramichelea.com). District is produced with 40% of pre-consumer materials, as certified by a qualified external company (certificates available on the website www.ceramichelea.com).



**LEA CERAMICHE HA SCELTO MICROBAN®,
IL LEADER MONDIALE NELLA PROTEZIONE ANTIBATTERICA**
*LEA CERAMICHE CHOOSES MICROBAN®,
THE GLOBAL LEADER IN ANTIMICROBIAL TECHNOLOGY*

PROTEZIONE 24 ORE SU 24
24/7 COVERAGE

EFFICACE CONTRO MACCHIE E ODORI CHE CAUSANO BATTERI
EFFECTIVE AGAINST STAIN AND ODOR CAUSING BACTERIA

MOLTEPLICI APPLICAZIONI ED UTILIZZI
MULTIPLE APPLICATIONS

TRATTAMENTO PERMANENTE
PERMANENT PROTECTION

INTEGRATA NELLA PIASTRELLA
INTEGRATED IN THE TILE

EFFICACE SU OGNI SUPERFICIE
EFFICIENT ON ANY SURFACE

DISTRICT

NEW CONCRETE



LEA

CERAMICHE

LEA CERAMICHE
Via Cameazzo, 21
41042 Fiorano Modenese
Modena Italy

Tel +39 0536 837811
Fax +39 0536 830326
info@ceramichelea.it
www.ceramichelea.com

Panariagroup Industrie Ceramiche
S.p.A.

SHOWROOM LEA CERAMICHE
Via Durini, 3
20122 Milano

Tel +39 02 76011406
showroom_milano@ceramichelea.it

LEA NORTH AMERICA, LLC
800 Clanton Road, Suite N
Charlotte, NC 28217

Tel +1 704 522 6300
Fax +1 704 522 6080
info@leausa.us
www.leausa.us