

MAKÒ



Makò, un richiamo a preziosi tessuti.

Dalla restituzione materica di esperienze tattili ed emotive nasce Makò, un rivestimento attuale che rende la sensazione del rilievo tessile, il lino come il cotone, arricchito da impunture di incisioni smaltate.

Una proposta innovativa e moderna che invita a farsi parte integrante dell'ambiente che ci circonda: la bellezza delle superfici, la consistenza dei decori e il fascino dei colori, inducono ad una nuova esperienza sensoriale, visiva ed estetica.

Makò, a recall to precious textiles.

Makò was created from the tactile and emotive experiences of materials, a contemporary covering that reproduces the sensory effect of textiles, linen as well as cotton, enriched with colored engraved stitches.

An innovative and modern proposal that invites you to be part of the surrounding environment: the beauty of surfaces, the texture of decorations and the charm of the colours, lead to a new sensory, visual and aesthetic experience.







CEDAR BRUNO 60x60cm - 23.6x23.6"

PAPIRO BIANCO 2x60cm - 0.8x23.6"
9,7x60cm - 3.8x23.6"
60x60cm - 23.6x23.6"
DECORO WALLPAPER GREY
20x60cm - 7.9x23.6"

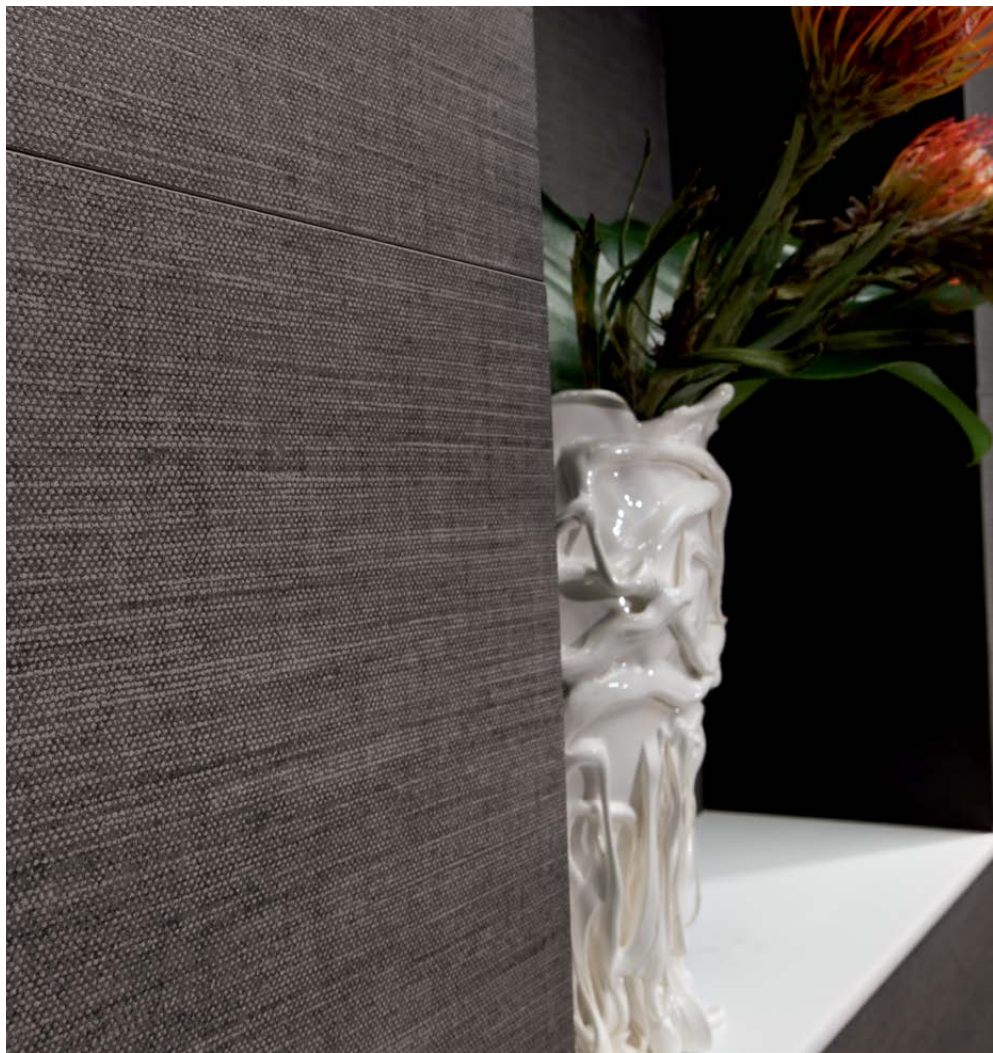


DECORO WALLPAPER GREY 20x60cm - 7.9x23.6"

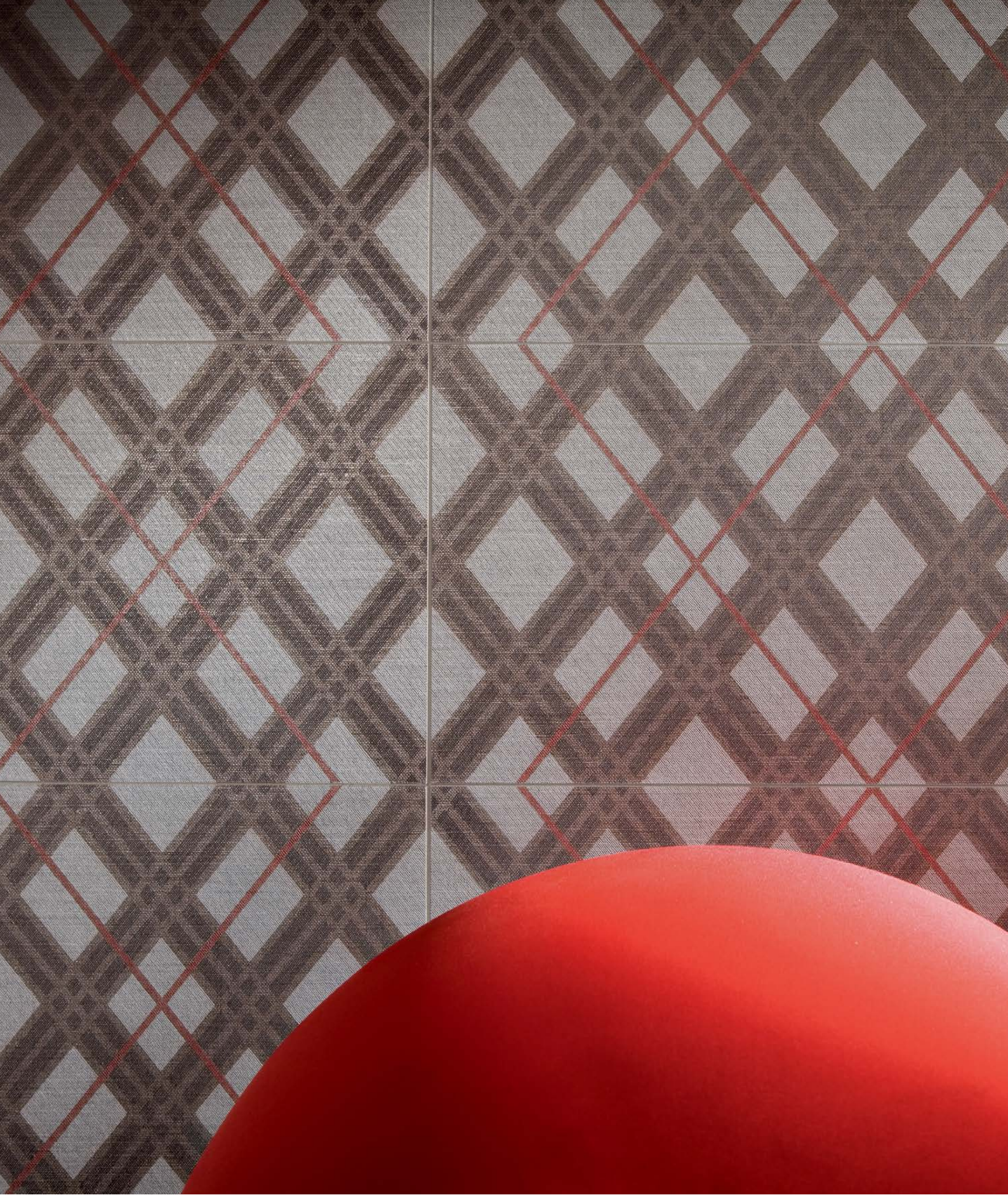


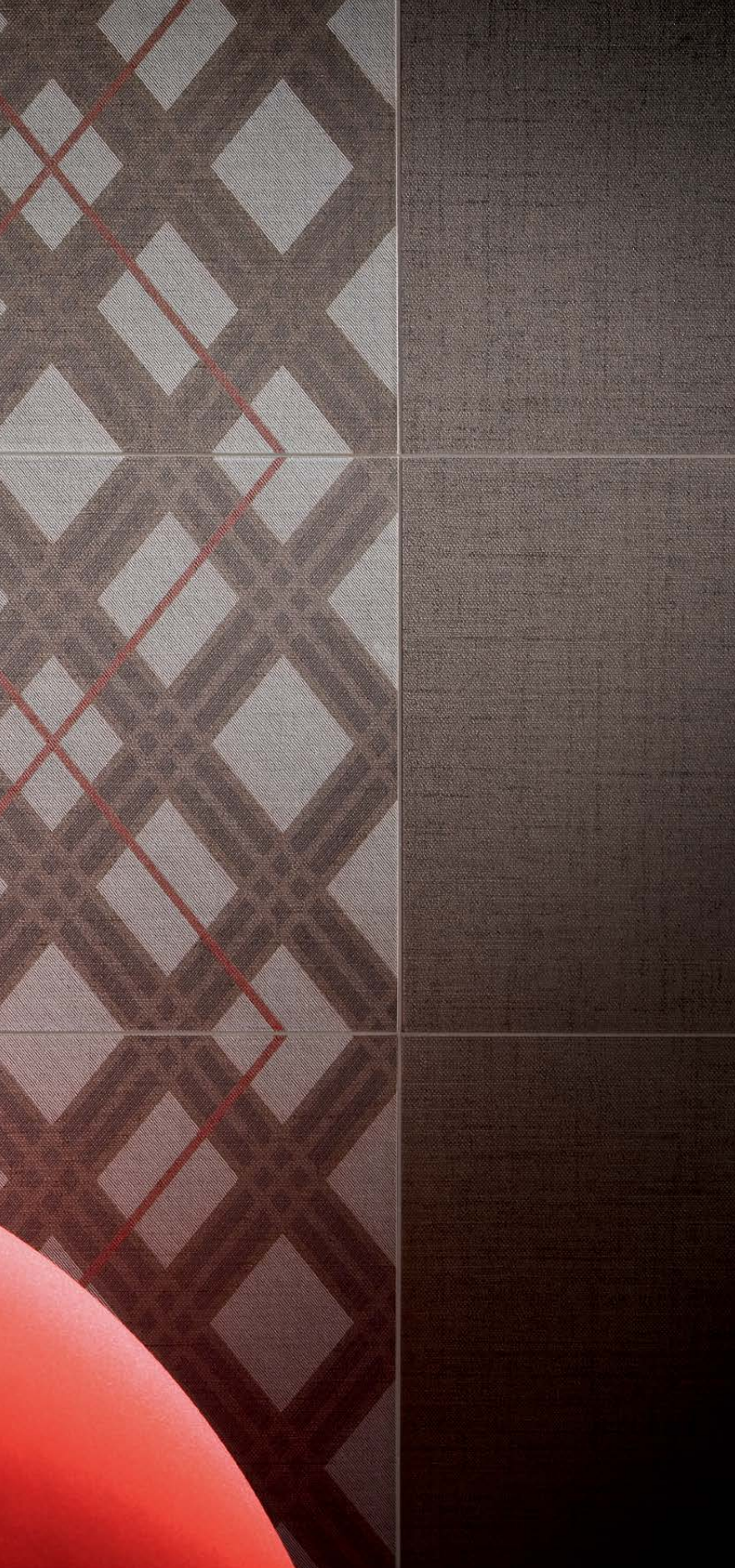


JAVA SCURO 30x60cm - 11.8x23.6" / 60x60cm - 23.6x23.6"



JAVA SCURO 30x60cm - 11.8x23.6"





CEDAR BRUNO 30x60cm - 11.8x23.6"
DECORO TARTAN CEDAR BRUNO 30x60cm - 11.8x23.6"
PAPIRO BIANCO 60x60cm - 23.6x23.6"

PAPIRO BIANCO 60x60cm - 23.6x23.6"
DECORO CROSS LINEN BEIGE 30x60cm - 11.8x23.6"





DECORO WALLFLOWER JAVA SCURO 30x60cm - 11.8x23.6"





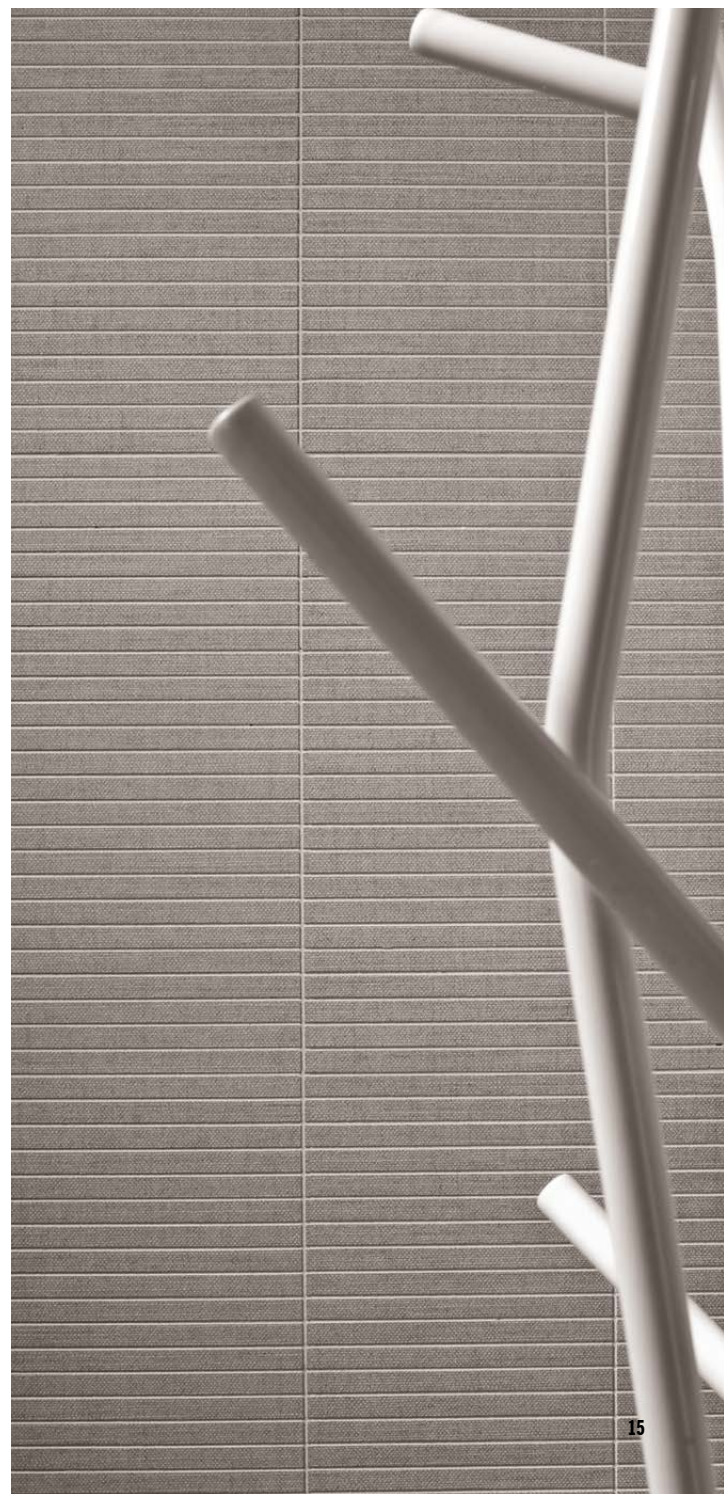
DECORO PIN STRIPED YUCCA GRIGIO
30x60cm - 11.8x23.6"
FASCIA TWILL COLD
3x60cm - 1.2x23.6"





YUCCA GRIGIO 30x60cm - 11.8x23.6" / 60x60cm - 23.6x23.6"
DECORO PIN STRIPED YUCCA GRIGIO 30x60cm - 11.8x23.6"
DECORO CORSET YUCCA GRIGIO 30x30cm - 11.8x11.8"
FASCIA TWILL COLD 3x60cm - 1.2x23.6"

DECORO CORSET YUCCA GRIGIO
30x30cm - 11.8x11.8"





LINEN BEIGE 60x60cm - 23.6x23.6"
PAPIRO BIANCO 2x60cm - 0.8x23.6" / 2x2cm - 0.8x0.8"





papiro bianco



2x2cm 0.8x0.8"
rett. LG9MK35 0010



2x60cm 0.8x23.6"
rett. LG9MK30 0040



9,7x60cm 3.8x23.6"
rett. LG9MK00 0210



30x60cm 11.8x23.6"
rett. LGVMKRO 1120



60x60cm 23.6x23.6"
rett. LGWMKRO 1120

linen beige



2x2cm 0.8x0.8"
rett. LG9MK36 0010



2x60cm 0.8x23.6"
rett. LG9MK31 0040



9,7x60cm 3.8x23.6"
rett. LG9MK01 0210



30x60cm 11.8x23.6"
rett. LGVMKR1 1120



60x60cm 23.6x23.6"
rett. LGWMKR1 1120

yucca grigio



2x2cm 0.8x0.8"
rett. LG9MK37 0010



2x60cm 0.8x23.6"
rett. LG9MK32 0040



9,7x60cm 3.8x23.6"
rett. LG9MK02 0210



30x60cm 11.8x23.6"
rett. LGVMKR2 1120



60x60cm 23.6x23.6"
rett. LGWMKR2 1120

cedar bruno



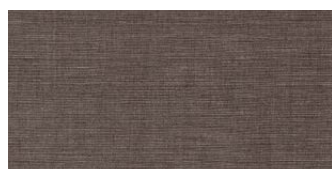
2x2cm 0.8x0.8"
rett. LG9MK38 0010



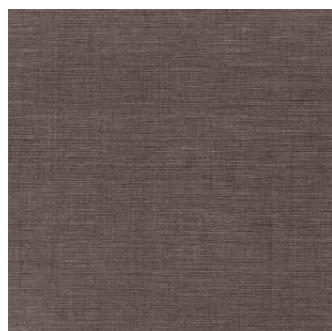
2x60cm 0.8x23.6"
rett. LG9MK33 0040



9,7x60cm 3.8x23.6"
rett. LG9MK03 0210



30x60cm 11.8x23.6"
rett. LGVMKR3 1120



60x60cm 23.6x23.6"
rett. LGWMKR3 1120

java scuro



2x2cm 0.8x0.8"
rett. LG9MK39 0010



2x60cm 0.8x23.6"
rett. LG9MK34 0040



9,7x60cm 3.8x23.6"
rett. LG9MK04 0210



30x60cm 11.8x23.6"
rett. LGVMKR4 1120



60x60cm 23.6x23.6"
rett. LGWMKR4 1120

CORREDI E PEZZI SPECIALI
SPECIAL PIECES AND DECORS
ARTICLES ET PIÈCES SPÉCIALES
FORMSTÜCKE UND DEKORE



DECORO PIN STRIPED
 papiro bianco
 30x60cm 11.8x23.6" LG9MK23 [0880](#)



DECORO CORSET
 papiro bianco
 30x30cm 11.8x11.8" LG9MK16 [0210](#)



DECORO TARTAN
 cedar bruno
 30x60cm 11.8x23.6" LG9MK13 [0620](#)



DECORO PIN STRIPED
 linen beige
 30x60cm 11.8x23.6" LG9MK24 [0880](#)



DECORO CORSET
 linen beige
 30x30cm 11.8x11.8" LG9MK17 [0210](#)



DECORO TARTAN
 java scuro
 30x60cm 11.8x23.6" LG9MK12 [0620](#)



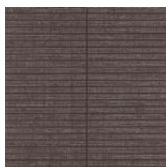
DECORO PIN STRIPED
 yucca grigio
 30x60cm 11.8x23.6" LG9MK25 [0880](#)



DECORO CORSET
 yucca grigio
 30x30cm 11.8x11.8" LG9MK18 [0210](#)



DECORO PIN STRIPED
 cedar bruno
 30x60cm 11.8x23.6" LG9MK27 [0880](#)



DECORO CORSET
 cedar bruno
 30x30cm 11.8x11.8" LG9MK20 [0210](#)



DECORO CROSS
 linen beige
 30x60cm 11.8x23.6" LG9MK10 [0740](#)



DECORO PIN STRIPED
 java scuro
 30x60cm 11.8x23.6" LG9MK26 [0880](#)



DECORO CORSET
 java scuro
 30x30cm 11.8x11.8" LG9MK19 [0210](#)



DECORO CROSS
 yucca grigio
 30x60cm 11.8x23.6" LG9MK11 [0740](#)



DECORO WALLPAPER

beige
20x60cm 7.9x23.6" LG9MK15 [0620](#)



DECORO WALLFLOWER

30x60cm 11.8x23.6"
cedar bruno LG9MK09 [0620](#)
papiro bianco LG9MK05 [0620](#)
linen beige LG9MK06 [0620](#)
yucca grigio LG9MK07 [0620](#)
java scuro LG9MK08 [0620](#)



BATTISCOPA

10x60cm 3.9x23.6"
papiro bianco LGBMK00 [0120](#)
linen beige LGBMK10 [0120](#)
yucca grigio LGBMK20 [0120](#)
cedar bruno LGBMK30 [0120](#)
java scuro LGBMK40 [0120](#)



DECORO WALLPAPER

grey
20x60cm 7.9x23.6" LG9MK14 [0620](#)



GRADINO STEP rett.

60x60cm 23.6x23.6"
papiro bianco LGCMKR0 [0610](#)
linen beige LGCMKR1 [0610](#)
yucca grigio LGCMKR2 [0610](#)
cedar bruno LGCMKR3 [0610](#)
java scuro LGCMKR4 [0610](#)



FASCIA TWILL

cold
3x60cm 1.2x23.6" LG9MK41 [0550](#)

△

BEAK JOLLY

1,3x1,3cm 0.5x0.5"
papiro bianco LG9MK47 [0230](#)
linen beige LG9MK48 [0230](#)
yucca grigio LG9MK49 [0230](#)
cedar bruno LG9MK50 [0230](#)
java scuro LG9MK51 [0230](#)



FASCIA TWILL

warm
3x60cm 1.2x23.6" LG9MK40 [0450](#)

RACCORDO JOLLY

1,3x30cm 0.5x11.8"
papiro bianco LG9MK42 [0180](#)
linen beige LG9MK43 [0180](#)
yucca grigio LG9MK44 [0180](#)
cedar bruno LG9MK45 [0180](#)
java scuro LG9MK46 [0180](#)



FASCIA BROCADE

cold
3x60cm 1.2x23.6" LG9MK22 [0430](#)



FASCIA BROCADE

warm
3x60cm 1.2x23.6" LG9MK21 [0430](#)

MAKÒ

gres smaltato a massa colorata GL
colored-body glazed stoneware
grès émaillé a masse colorée
glasiertes feinsteinzeug mit farbiger masse

spessore 11mm
thickness
épaisseur
stärke

	CARATTERISTICHE TECNICHE* TECHNICAL CHARACTERISTICS CARACTÉRISTIQUES TECHNIQUES TECHNISCHE EIGENSCHAFTEN	metodo di prova test method methode d'essai prufmethode	fondi plain tile fond unifliese
	assorbimento d'acqua water absorption absorption d'eau wasserabsorption	iso 10545-3	conforme compliant conforme gemäß
	resistenza al gelo frost resistance résistance au gel frostbeständigkeit	iso 10545-12	resistente resistant résistant beständig
	resistenza alla flessione bending strength résistance à la flexion beigefestigkeit	iso 10545-4	≥ 50 N/mm ² ≥ 510 Kg/cm ²
	sforzo di rottura (S) breaking strength (S) chargement de rupture (S) bruchlast (S)	iso 10545-4	≥ 3000 N
	resistenza all'abrasione superficiale resistance to superficial abrasion résistance à l'abrasion superficielle oberflächliche reibungsbeständigkeit	iso 10545-7	pei 5 (papiro bianco/linen beige/yucca grigio) pei 4 (cedar bruno/java scuro)
	dilatazione termica lineare thermal expansion dilatation thermique linéaire thermische dilatation	iso 10545-8	$\alpha \leq 7 \times 10^{-6} \text{ } ^\circ\text{C}^{-1}$
	resistenza agli sbalzi termici thermal shock resistance résistance aux choc thermiques temperatur wechselbeständigkeit	iso 10545-9	resistente resistant résistant beständig
	resistenza attacco chimico chemical resistance résistance chimique chemischee beständigkeit	iso 10545-13	gla, gha resistente resistant résistant beständig
	resistenza attacco chimico a prodotti di uso domestico house hold chemical resistance résistance aux agent chimique des produits emploi domestique chemischee beständigkeit gegen haushalt putzmittel	iso 10545-13	ga resistente resistant résistant beständig
	resistenza alle macchie stain resistance résistance aux taches fleckenbeständigkeit	iso 10545-14	5 resistente resistant résistant beständig
	resistenza allo scivolamento slip resistance résistance au glissement rutschfestigkeit	din 51130	r9
	coefficiente di attrito dinamico dynamic friction coefficient coefficient de friction dynamique dynamischer reibungskoeffizient	b.c.r.	$\mu > 0,40$
	coefficient of friction (C.O.F.) coefficiente attrito statico	astm c1028	wet/dry ≥ 0.60
	stonalizzazione shading denuançage spielfarbig		V1

*ISO 13006-G Bla GL – EN 14411-G Bla GL – ANSI 137.1 (Glazed Porcelain Tiles - Class P1)

IMPIEGHI
USES
EMPLOI
ANWENDUNGSBEREICHE

	alberghi hotels hotels hotels		locali pubblici public spaces lieux publics öffentliche bereiche
	abitazioni housing maisons wohnbereiche		aeroporti airports aéroports flughafen
	bar - ristoranti bar - restaurants bar - restaurants cafés - restaurants, gasthäuser		centri commerciali malls centre commerciaux einkaufszentren
	negozi shops magasins geschäfte		stazioni train stations gares bahnhöfe

IMBALLAGGI
PACKING
EMBALLAGE
VERPACKUNGEN

articolo			scatola			europallet		
			pz.	mq	kg	scat.	mq	kg
fondo	60x60	23.6x23.6	4	1,44	35,0	24	34,6	840,0
fondo	30x60	11.8x23.6	8	1,44	34,9	32	46,1	1116,8
fondo	9,7x60	3.8x23.6	13	0,76	19,2	60	45,4	1152,0
fondo	2x60	0.8x23.6	12	0,14	3,5	-	-	-
fondo	2x2	0.8x0.8	12	-	-	-	-	-
decoro pin striped	30x60	11.8x23.6	4	0,72	17,2	36	25,9	619,2
decoro wallflower	30x60	11.8x23.6	4	0,72	17,2	48	34,6	825,6
decoro tartan	30x60	11.8x23.6	4	0,72	17,2	48	34,6	825,6
decoro cross	30x60	11.8x23.6	4	0,72	17,2	32	46,1	1116,8
decoro wallpaper	20x60	7.9x23.6	4	0,48	11,44	60	28,8	686,4
decoro corset	30x30	11.8x11.8	6	0,54	13,1	32	46,1	1116,8
decoro brocade	3x60	0.6x23.6	12	0,22	5,16	-	-	-
decoro twill	3x60	0.6x23.6	10	0,18	7,5	-	-	-
battiscopa	10x60	3.9x23.6	12	7,2 m.l.	18,0	55	396,0 m.l.	990,0
gradino step	60x60	23.6x23.6	4	1,44	35,0	24	34,6	840,0
beak jolly	1,3x1,3	0.5x0.5	4	-	-	-	-	-
raccordo jolly	1,3x30	0.5x11.8	8	0,03	0,3	-	-	-



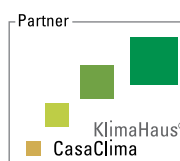
iso 14001



iso 9001



emas



casaclima ***



leed*



marchio CE



leed**



ecolabel

* LEED

Lea Ceramiche, tramite la holding Panariagroup Industrie Ceramiche S.p.A., è socio ordinario del Green Building Council e del GBC Italia. Through Panariagroup Industrie Ceramiche S.p.A., Lea Ceramiche is an ordinary member of the Green Building Council and the GBC Italia. Par le biais de Panariagroup Industrie Ceramiche S.p.A., Lea Ceramiche est membre ordinaire du Green Building Council et du GBC Italia. Lea Ceramiche, durch die Holding Panariagroup Industrie Ceramiche S.p.A., ist ordentliches Mitglied von dem Green Building Council und dem GBC Italien. Lea Ceramiche, a través del holding Panariagroup Industrie Ceramiche S.p.A., es miembro afiliado del Consejo Construcción Verde y del Consejo Construcción Verde de Italia.

LEGENDA CODICI
CODE NOTICE
LÉGENDE CODES
ERLÄUTERUNG DES ARTIKELS

** LEED

Il contenuto di materiale riciclato "pre-consumo" della serie Makò è del 40%, come certificato da ente esterno qualificato (certificato disponibile sul sito www.ceramichelea.it). Makò is produced with 40% of pre-consumer materials, as certified by a qualified external company (certificate available on the website www.ceramichelea.it).

*** CASACLIMA

Lea Ceramiche, tramite la holding Panariagroup Industrie Ceramiche S.p.A., ha ottenuto la certificazione Partner Casaclima. Through Panariagroup Industrie Ceramiche S.p.A., Lea Ceramiche has obtained the Partner Casaclima certification. Par le biais de Panariagroup Industrie Ceramiche S.p.A., Lea Ceramiche a obtenu la certification Partner Casaclima. Lea Ceramiche, durch die Holding Panariagroup Industrie Ceramiche S.p.A., hat die Bescheinigung als Partner Casaclima bekommen. Lea Ceramiche, a través del holding Panariagroup Industrie Ceramiche S.p.A., ha obtenido la certificación Partner Casaclima.

CODICE ARTICOLO

L000000

CODICE PREZZO

0000 materiale venduto al mq

0000 materiale venduto al pz

PRODUCT CODE

L000000

PRICE CODE

0000 item sold by sqmt

0000 item sold by piece

CODE ARTICLE

L000000

CODE PRIX

0000 article vendu au m²

0000 article vendu a la piece

ARTIKEL NUMMER

L000000

PREIS ARTIKEL NUMMER

0000 artikel qm weise

0000 artikel stückweise

MAKÒ

LEA

CERAMICHE

LEA CERAMICHE

Via Cameazzo, 21
41042 Fiorano Modenese
Modena Italy

Tel +39 0536 837811
Fax +39 0536 830326
info@ceramichelea.it
www.ceramichelea.com

Panariagroup Industrie Ceramiche S.p.A.

SHOWROOM LEA CERAMICHE

Via Durini, 3
20122 Milano

Tel +39 02 76011406
showroom_milano@ceramichelea.it

LEA NORTH AMERICA, LLC

800 Clanton Road, Suite N
Charlotte, NC 28217

Tel +1 704 522 6300
Fax +1 704 522 6080
info@leausa.us